



Datasheets

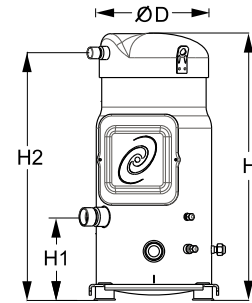
# Performer<sup>®</sup> scroll compressors **SM / SY / SZ / SH**



**General Characteristics**

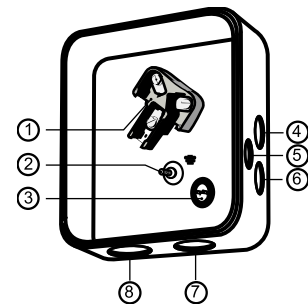
Model number (on compressor nameplate)	SM125S4RC	SM125S4CC
Code number for Singlepack*	SM125-4RI	SM125-4CAI
Code number for Industrial pack**	SM125-4RM	SM125-4CAM
Drawing number	8551121b	8551112b
Suction and discharge connections	Rotolock	Brazed
Suction connection	1-3/4 " Rotolock	1-3/8 " ODF
Discharge connection	1-1/4 " Rotolock	7/8 " ODF
Suction connection with supplied sleeve	1-1/8 " ODF	
Discharge connection with supplied sleeve	3/4 " ODF	
Oil sight glass	Threaded	Threaded
Oil equalization connection	3/8" flare SAE	3/8" flare SAE
Oil drain connection	1/4" flare	1/4" flare
LP gauge port	Schrader	Schrader
IPR valve	None	None
Swept volume	10.17 in3/rev	
Displacement @ Nominal speed	1024 cfh @ 2900 rpm - 1236 cfh @ 3500 rpm	
Net weight	172 lbs	
Oil charge	128 oz, Mineral - 160P	
Maximum system test pressure Low Side / High side	363 psi / 464 psi	
Maximum differential test pressure	348 psi	
Maximum number of starts per hour	12	
Refrigerant charge limit	24 lbs	
Approved refrigerants	R22, R417A-160SZ	

**Dimensions**



D=10 inch, H=22.8 inch,  
H1=7.1 inch, H2=21.1 inch

**Terminal box**



IP54 (with cable gland)

- 1: Power connection, 3 x 4.8 mm (3/16")
- 2: Earth M5
- 3: Thermostat connector
- 4: Knock-out Ø 22 mm (7/8") for 1/2" conduit
- 5: Knock-out Ø 16.5 mm (0.65")
- 6: Knock-out Ø 20.5 mm (0.81")
- 7: Double knock-out Ø 32.1 mm (1.26") & Ø 25.4 mm (1")
- 8: Double knock-out Ø 44 mm (1-3/4") for 1-1/4" conduit & Ø 34 mm (1-3/8") for 1" conduit

**Electrical Characteristics**

Nominal voltage	380-400V/3/50Hz - 460V/3/60Hz
Voltage range	340-440 V @ 50Hz - 414-506 V @ 60Hz
Winding resistance (between phases) +/- 7% at 77°F	1.16 Ω
Maximum Must Trip current (MMT)	25 A
Locked Rotor Amps (LRA)	120 A
Motor protection	Internal thermostat, ext. overload protector needed

**Recommended Installation torques**

Suction Rotolock nut or valve	81 ft.lbs
Discharge Rotolock nut or valve	66 ft.lbs
Oil sight glass	37 ft.lbs
Power connections / Earth connection	2 ft.lbs / 1 ft.lbs
Terminal box cover screws	2 ft.lbs
Mounting bolts	15 ft.lbs

**Parts shipped with compressor**

Mounting kit with grommets, bolts, nuts, sleeves and washers
Initial oil charge
Installation instructions

**Approvals** : CE certified, UL certified (file SA6873), -

\*Singlepack: Compressor in cardboard box

\*\*Industrial pack: 6 Unboxed compressors on pallet (order per multiples of 6)

**Rotolock accessories, suction side**
**Code no.**

Solder sleeve, P02 (1-3/4" Rotolock, 1-1/8" ODF)	8153004
Solder sleeve, P10 (1-3/4" Rotolock, 1-3/8" ODF)	8153003
Angle adapter, C02 (1-3/4" Rotolock, 1-1/8" ODF)	8168005
Rotolock valve, V02 (1-3/4" Rotolock, 1-1/8" ODF)	8168028
Rotolock valve, V10 (1-3/4" Rotolock, 1-3/8" ODF)	8168022
Gasket, 1-3/4"	8156132

**Rotolock accessories, discharge side**
**Code no.**

Solder sleeve, P04 (1-1/4" Rotolock, 3/4" ODF)	8153008
Angle adapter, C04 (1-1/4" Rotolock, 3/4" ODF)	8168006
Rotolock valve, V04 (1-1/4" Rotolock, 3/4" ODF)	8168029
Rotolock valve, V05 (1-1/4" Rotolock, 7/8" ODF)	8168030
Gasket, 1-1/4"	8156131

**Rotolock accessories, sets**
**Code no.**

Solder sleeve adapter set, 1-3/8" ODF & 7/8" ODF	7765006
Angle adapter set, C02 (1-3/4"~1-1/8"), C04 (1-1/4"~3/4")	7703014
Valve set, V02 (1-3/4"~1-1/8"), V04 (1-1/4"~3/4")	7703009
Gasket set, 1-1/4", 1-3/4", 2-1/4", OSG gaskets black & white	8156013

**Oil / lubricants**
**Code no.**

Mineral oil, 160P, 2 liter can	7754001
Mineral oil, 160P, 5 liter can	7754002

**Crankcase heaters**
**Code no.**

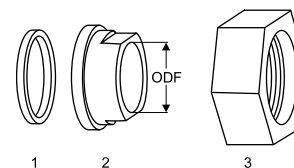
Surface sump heater + bottom insulation, 48 W, 24 V, CE mark, UL	120Z0363
Surface sump heater + bottom insulation, 48 W, 230 V, CE mark, UL	120Z0384
Surface sump heater + bottom insulation, 48 W, 400 V, CE mark, UL	120Z0385
Surface sump heater + bottom insulation, 48 W, 460 V, CE mark	120Z0386
Belt type crankcase heater, 65 W, 460 V, CE mark, UL	120Z0466
Belt type crankcase heater, 65 W, 230 V, CE mark, UL	7773107
Belt type crankcase heater, 65 W, 400 V, CE mark, UL	7773117
Belt type crankcase heater, 65 W, 400 V, CE mark, UL	120Z0039

**Miscellaneous accessories**
**Code no.**

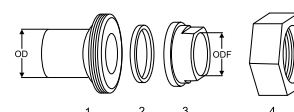
Electronic soft start kit, MCI 25 C	7705007
Soft start kit with statoric resistors, prewired box, SCR03	7705001
Acoustic hood for scroll compressor S115-S125	7755009
Discharge thermostat kit	7750009

**Spare parts**
**Code no.**

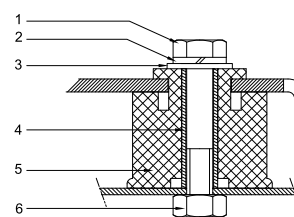
Mounting kit for 1 scroll compressor including 4 grommets, 4 sleeves, 4 bolts, 4 washers	8156138
Mounting kit for 1 scroll compressor including 4 grommets, 4 sleeves, 4 bolts, 4 washers	8156146
Oil sight glass with gaskets (black & white)	8156019
Gasket for oil sight glass (white teflon)	8156129
Terminal box 7.3" x 7.8" incl cover	8156139
T block connector 2.4" x 3"	8173021

**Gaskets, sleeves and nuts**


- 1: Gasket
- 2: Solder sleeve
- 3: Rotolock nut

**Solder sleeve adapter set**


- 1: Rotolock adapter (Suc & Dis)
- 2: Gasket (Suc & Dis)
- 3: Solder sleeve (Suc & Dis)
- 4: Rotolock nut (Suc & Dis)

**Mounting kit**


- 1: Bolt (4x)
- 2: Lock washer (4x)
- 3: Flat washer (4x)
- 4: Sleeve (4x)
- 5: Grommet (4x)
- 6: Nut (4x)

**Performance data at 60 Hz, ARI rating conditions**
**R22**

Cond. temp. in °F (tc)	Evaporating temperature in °F (to)								
	0	10	20	30	35	40	45	50	55

**Cooling capacity in Btu/h**

90	60 848	77 233	95 626	116 103	127 145	138 736	150 885	163 601	176 893
100	57 147	73 293	91 379	111 480	122 310	133 671	145 572	158 024	171 036
110	-	68 990	86 724	106 405	116 999	128 107	139 739	151 905	164 613
120	-	64 303	81 640	100 855	111 191	122 024	133 364	145 220	157 602
130	-	-	76 102	94 807	104 862	115 398	126 423	137 948	149 981
140	-	-	-	88 239	97 990	108 206	118 894	130 065	141 726
150	-	-	-	-	-	100 425	110 754	121 548	132 816

**Power input in W**

90	6 645	6 707	6 773	6 841	6 876	6 911	6 945	6 980	7 013
100	7 525	7 578	7 633	7 687	7 714	7 741	7 766	7 791	7 814
110	-	8 575	8 617	8 656	8 674	8 691	8 707	8 721	8 733
120	-	9 710	9 737	9 760	9 768	9 775	9 780	9 782	9 783
130	-	-	11 008	11 011	11 009	11 005	10 998	10 988	10 976
140	-	-	-	12 422	12 410	12 394	12 374	12 352	12 325
150	-	-	-	-	-	13 954	13 921	13 884	13 843

**Current consumption in A**

90	11.21	11.28	11.36	11.46	11.52	11.58	11.65	11.73	11.80
100	12.07	12.12	12.18	12.26	12.31	12.36	12.41	12.47	12.54
110	-	13.16	13.21	13.26	13.29	13.33	13.37	13.41	13.46
120	-	14.43	14.45	14.48	14.50	14.52	14.54	14.57	14.59
130	-	-	15.95	15.95	15.95	15.95	15.96	15.96	15.97
140	-	-	-	17.68	17.66	17.65	17.63	17.62	17.61
150	-	-	-	-	-	19.64	19.60	19.56	19.53

**Mass flow in lbs/h**

90	800	1 002	1 224	1 467	1 597	1 733	1 873	2 020	2 172
100	783	990	1 217	1 465	1 597	1 735	1 878	2 026	2 181
110	-	973	1 205	1 458	1 592	1 732	1 877	2 028	2 185
120	-	949	1 186	1 444	1 581	1 724	1 871	2 025	2 184
130	-	-	1 160	1 424	1 563	1 708	1 858	2 014	2 176
140	-	-	-	1 394	1 537	1 684	1 837	1 996	2 160
150	-	-	-	-	-	1 651	1 807	1 968	2 135

**Energy Efficiency Ratio (E.E.R.)**

90	9.16	11.52	14.12	16.97	18.49	20.08	21.72	23.44	25.22
100	7.59	9.67	11.97	14.50	15.85	17.27	18.74	20.28	21.89
110	-	8.05	10.06	12.29	13.49	14.74	16.05	17.42	18.85
120	-	6.62	8.38	10.33	11.38	12.48	13.64	14.84	16.11
130	-	-	6.91	8.61	9.53	10.49	11.49	12.55	13.66
140	-	-	-	7.10	7.90	8.73	9.61	10.53	11.50
150	-	-	-	-	-	7.20	7.96	8.75	9.59

**Nominal performance at to = 45 °F, tc = 130 °F**

Cooling capacity	126 423	Btu/h	Current consumption	15.96	A
Power input	10 998	W	Mass flow	1 858	lbs/h
E.E.R.	11.49				

**Pressure switch settings**

Maximum HP switch setting	406	psi(g)
Minimum LP switch setting	7	psi(g)
LP pump down setting	19	psi(g)

T 0 : Evaporating temperature at dew point

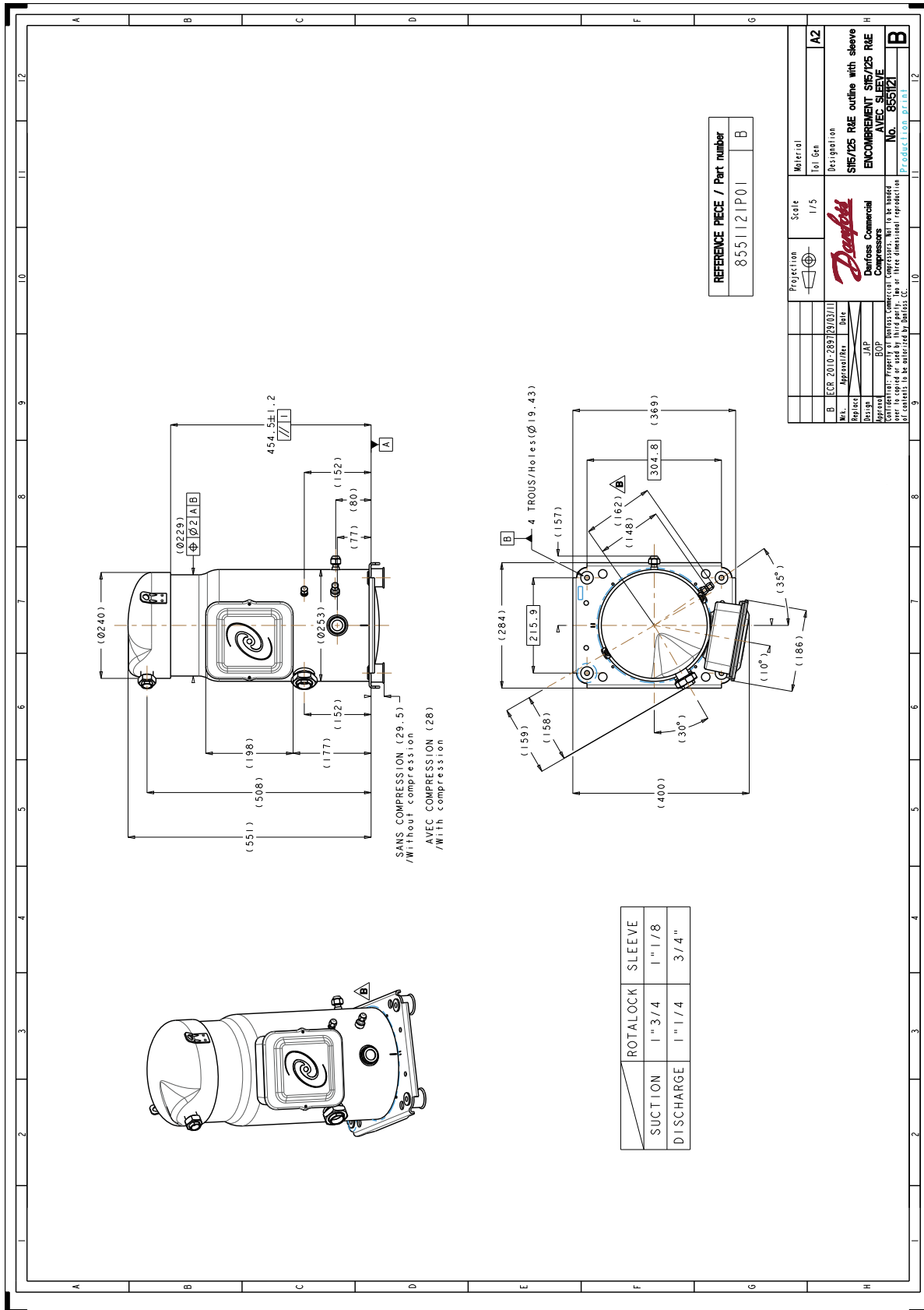
T C : Condensing temperature at dew point

Rating conditions : Superheat = 20 °F , Subcooling = 15 °F

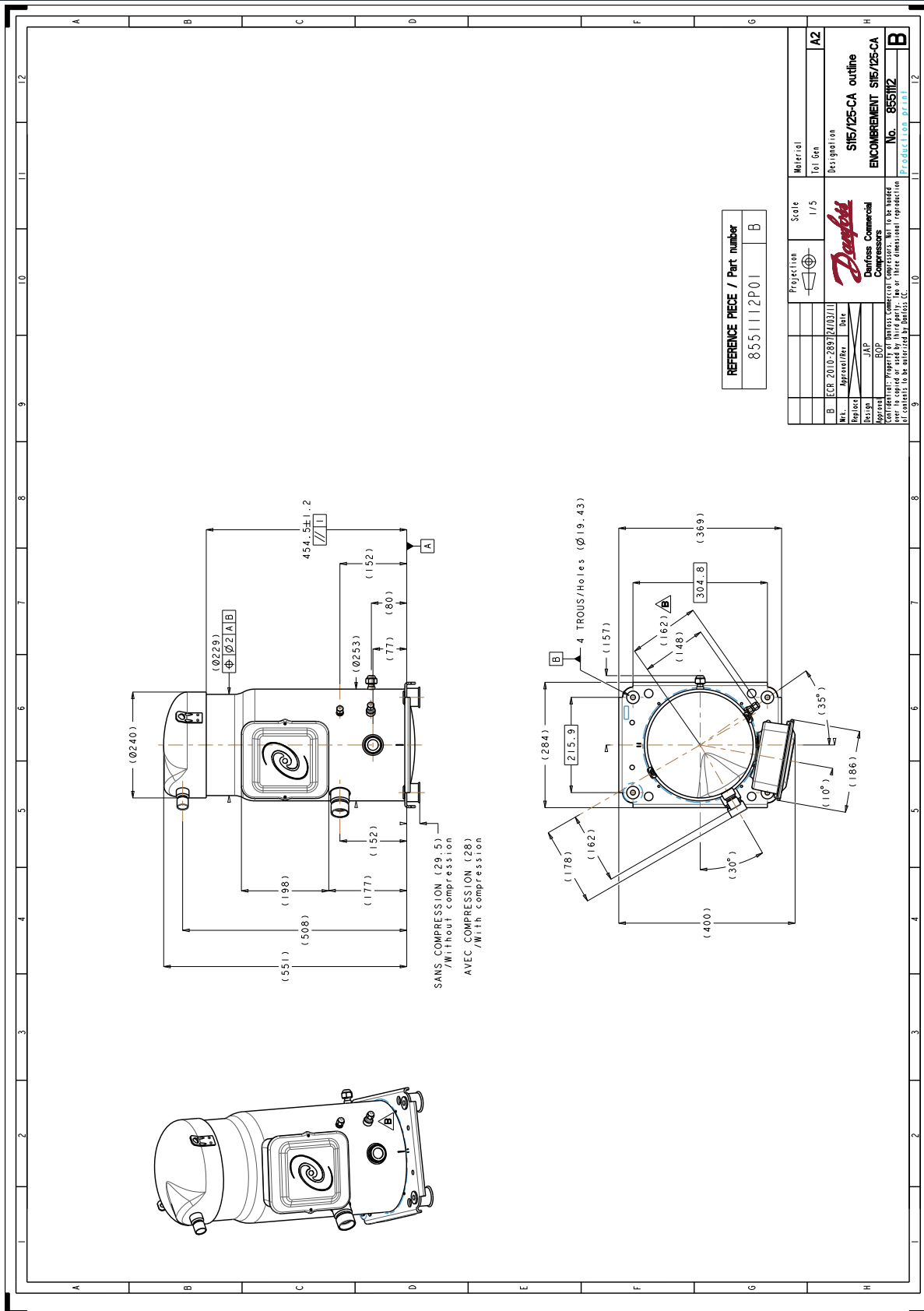
All performance data +/- 5%

**Sound power data**

Sound power level	79	dB(A)
With acoustic hood	71	dB(A)



Danfoss can accept no responsibility for possible errors in catalogues, brochures and other printed material. Danfoss reserves the right to alter its products without notice. This also applies to products already on order provided that such alternations can be made without consequential changes being necessary in specifications already agreed. All trademarks in this material are property of the respective companies. Danfoss, the Danfoss logotype and Maneurop are trademarks of Danfoss A/S. All rights reserved.



Danfoss can accept no responsibility for possible errors in catalogues, brochures and other printed material. Danfoss reserves the right to alter its products without notice. This also applies to products already on order provided that such alternations can be made without consequential changes being necessary in specifications already agreed. All trademarks in this material are property of the respective companies. Danfoss, the Danfoss logotype and Maneurop are trademarks of Danfoss A/S. All rights reserved.